

Titanium Heat Exchanger FPH Series

Effective 10-10-2012
©2012



FPH-10



FPH-5



FPH-3

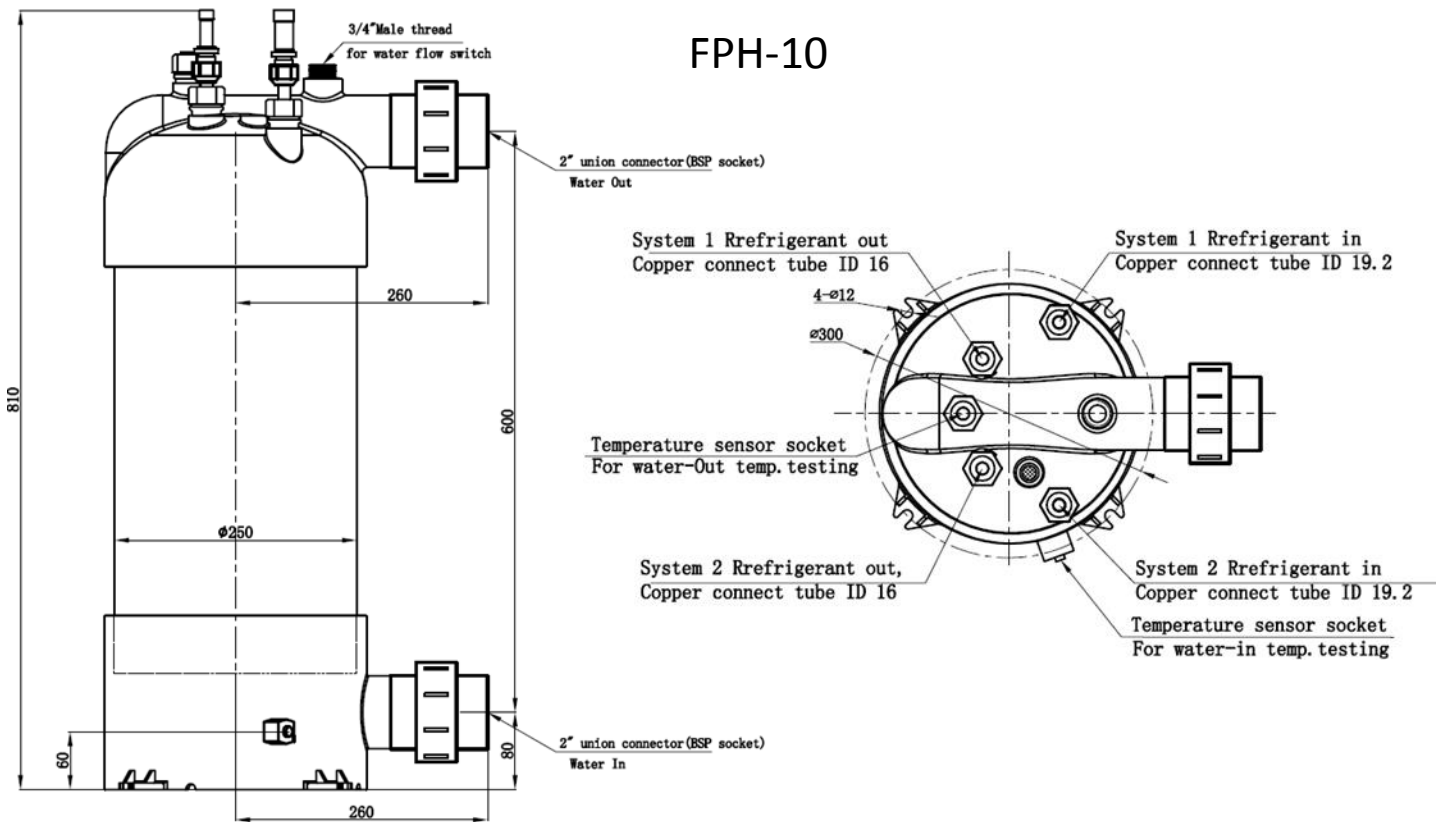
Corrosion resistant heat exchangers for swimming pool heaters, aquariums, aquaculture, waste heat recovery, water source geothermal heat exchange, and other non-potable water heating or heat transfer use with PVC compatible working fluids. All models use 6mm thick PVC shell with TA1 pure titanium seamless tube. Compatible with all CFC, HCFC, and HFC refrigerants. Designed for use with highly chlorinated water and salt water.

Water side temp. range	32 - 113F
Water side max. pressure	72 PSI
Refrigerant side temp. range	-58 - 248F
Refrigerant side max pressure	740 PSI

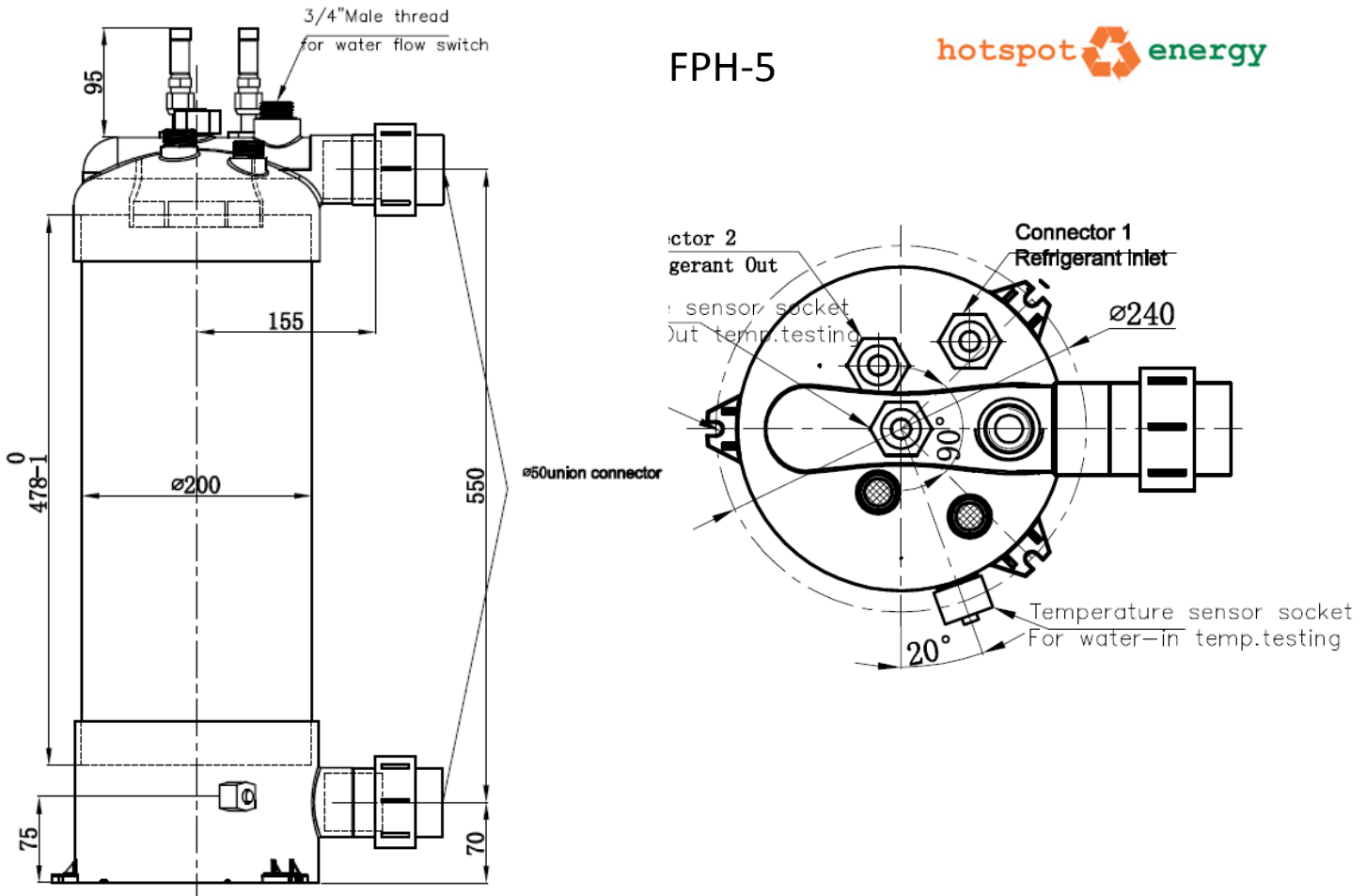
Model Number	Capacity Max. BTU	Max. Flow GPM	Water Ports	Ref. In/Out	Ti Coil D/L	Ti Coil In. ³	Ti Coil Max. Pressure	Height Inches	Diameter Inches
FPH-10	155,000	99	2"	*3/4"-1/2"	3/4" - 1968"	763	750 psi	29"	10 3/4"
FPH-5	75,000	70	1.5"	**5/8-1/2"	5/8" - 905"	234	740 psi	29"	8"
FPH-3	52,500	70	1.5"	**5/8-1/2"	5/8" - 630"	121	740 psi	25"	8"
FPH-2	30,000	70	1.5"	**1/2-3/8"	1/2" - 532"	83	740 psi	23"	7"

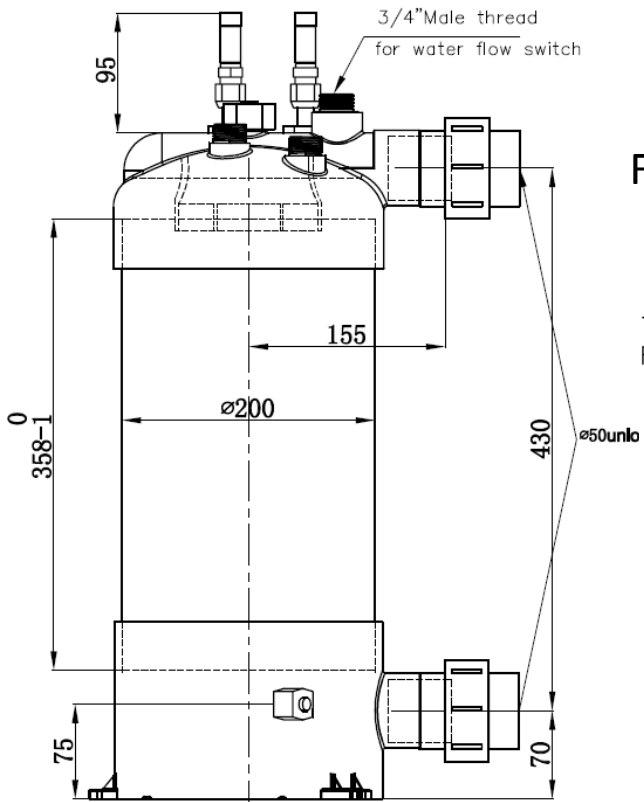
* FPH-10 has dual coils with two inlets and two outlets ** Some 2014 models will have refrigerant outlet size increased to match the inlet size.

FPH-10

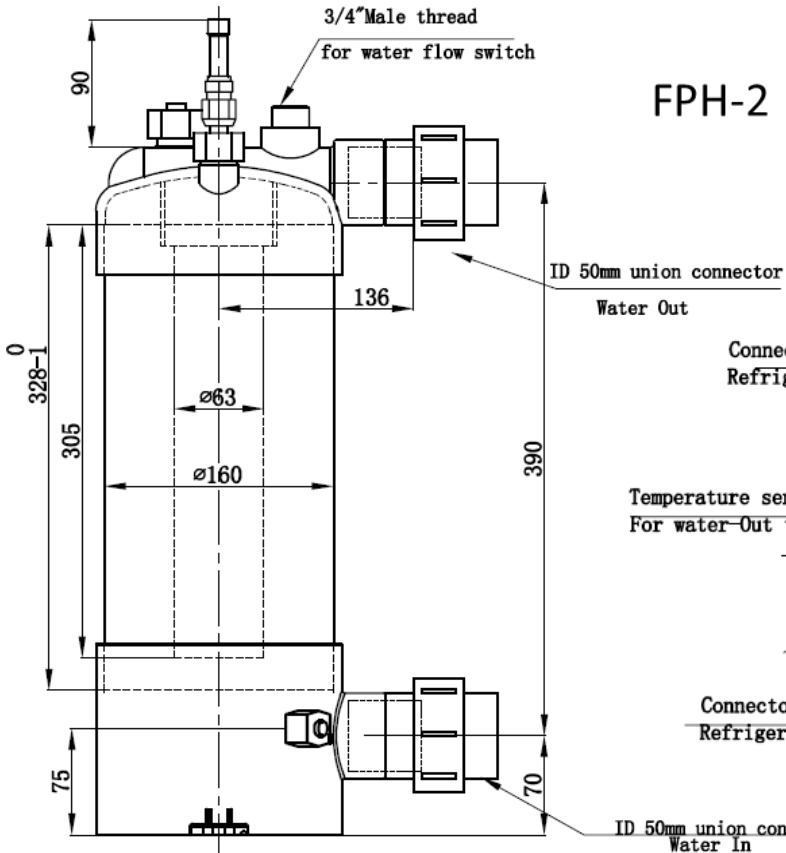
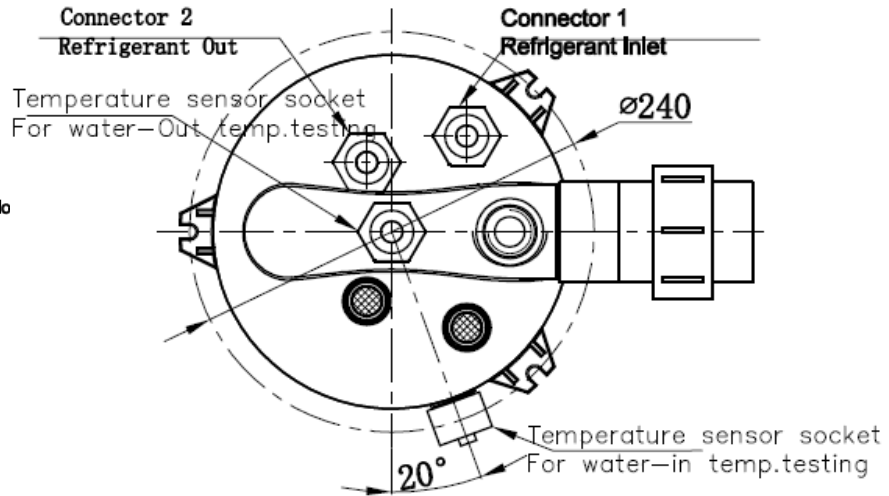


FPH-5





FPH-3



FPH-2

