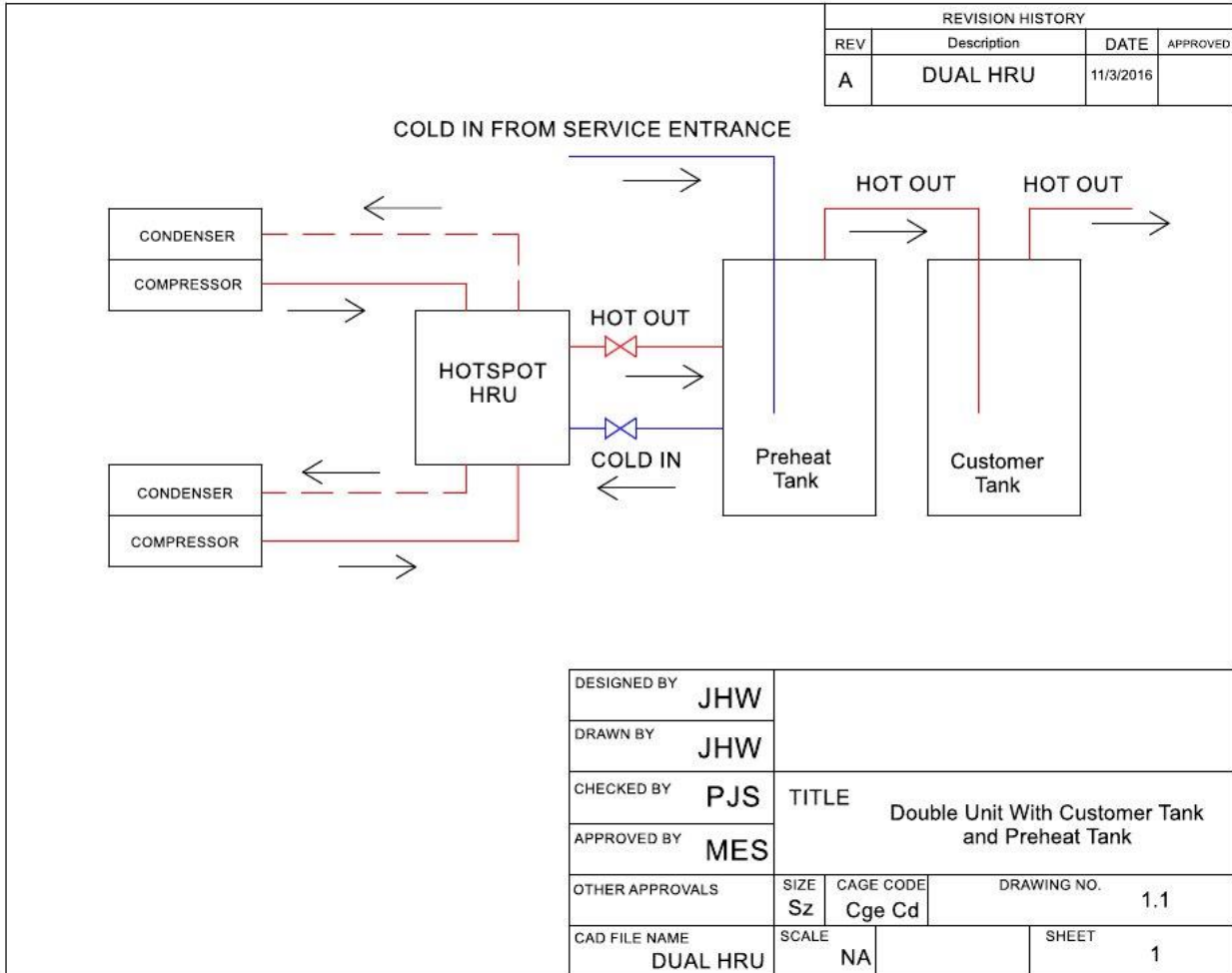


This shows 2 compressors using a dual heat recovery system with a HotSpot multi-port heat recovery pre-heat tank.



REVISION HISTORY			
REV	Description	DATE	APPROVED
A	DUAL HRU	11/3/2016	

DESIGNED BY	JHW		
DRAWN BY	JHW		
CHECKED BY	PJS	TITLE Double Unit With Customer Tank and Preheat Tank	
APPROVED BY	MES		
OTHER APPROVALS	SIZE Sz	CAGE CODE Cge Cd	DRAWING NO. 1.1
CAD FILE NAME DUAL HRU	SCALE NA		SHEET 1